

Sunseeker Super Yachts



(Sunseeker 37 Mt Tri – Deck Yacht.)

Project 37 Mt Tri Deck Yacht

Location Poole, Dorset.

Client



Pipe System Bondstrand 2000M conductive GRE Pipe & Fittings
1"– 20" Quick Lock adhesive joints
4"– 6" Laminated joints (special fabrication)

Application	Engine cooling water	Raw water discharge
	Raw water supply	Exhaust outlet
	Deck drains	Anchor chain tube

Design Criteria 16 bar operating pressure
24 bar test pressure
93°C maximum temperature

Scope of Work

Design Assistance

Material selection and approval compliance.

Isometric Drawing

2D & 3D isometric drawing production and document control.

Spool Fabrication

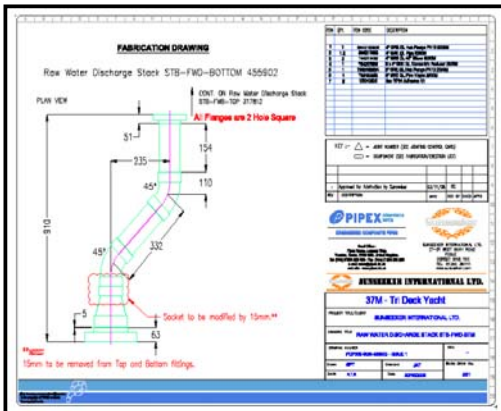
All spools prefabricated in the Pipex workshop a controlled environment ensuring quality at all stages of the process.

Spool Hydro Testing

100% hydro testing of spools to 1.5 x design pressure for 1 hour duration.

Onsite installation

Qualified Field Service Engineers ensuring manufacturers procedures are adhered to.



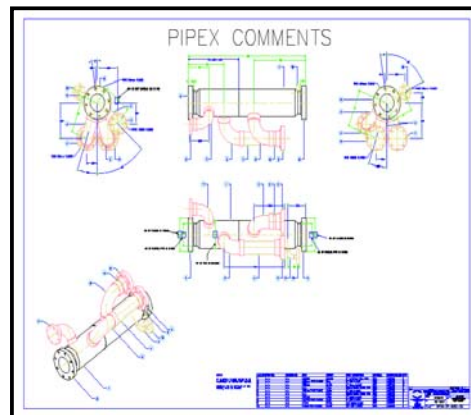
(Pipex AutoCAD drawing of Raw Water Discharge Stack.)



(Fabricated Raw Water Discharge Stack.)



(Pipex supplied the Sunseeker Sea Chest in two parts as per client requirement.)



(Sunseeker issued Pipex with drawing for design review.)